

# Neue Mitte Apartment and Business Complex - Asperg



ER 3-1

## Reference ER 3

### PROJECT DATA

Year:	2007
Building Owner:	Bauherrengemeinschaft Neue Mitte Asperg
Designers:	Freie Planungsgruppe 7, Stuttgart
Landscape designer:	-
Roof area:	1,380 m <sup>2</sup>
Green roof type:	Economy Roof
Implementation:	Garten Moser, Reutlingen
Details at:	<a href="http://www.optigreen.com">www.optigreen.com</a>

### CHARACTERISTICS

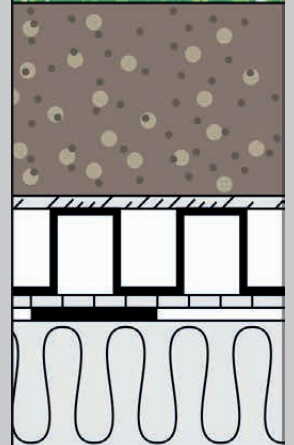
- Particularly affordable roof greening
- Low maintenance requirements
- Comparatively low biodiversity



**SERVICE**

Optigrün international AG  
Am Birkenstock 15 - 19  
72505 Krauchenwies - Germany  
Phone: +49 (0) 7576 - 7720  
E-mail: [info@optigruen.de](mailto:info@optigruen.de)  
[www.optigruen.com](http://www.optigruen.com)

### System Solution



ER 3-2



ER 3-3



ER 3-4