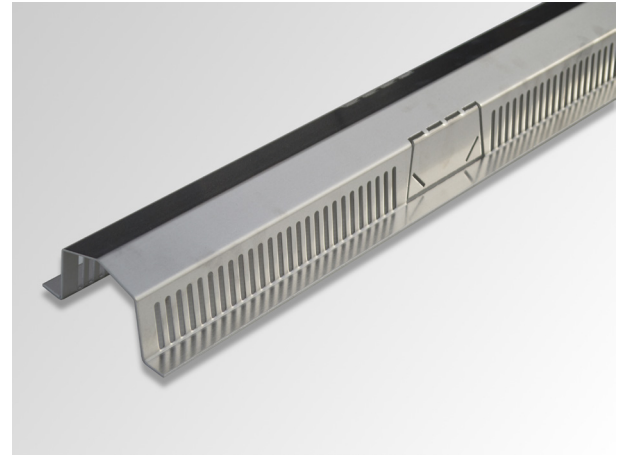


OPTIGRÜN WKA

Water Conduction Channel

As linear drainage to support the guidance of excess water from drainage and substrate layers, particularly in drainage valleys for intensive green roofs with a higher weight.



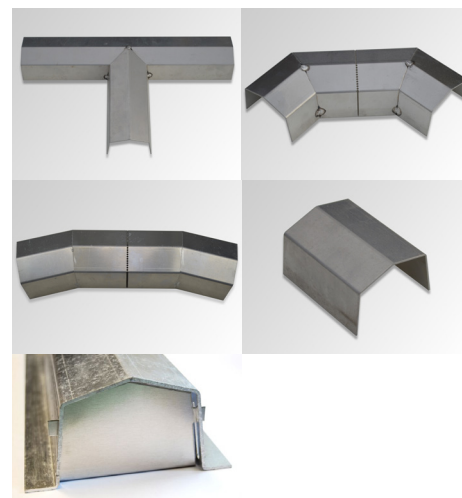
Material	Aluminium
Material thickness	2.0 mm (1.5 mm for extensive green roofs)
Colour	Aluminium natural
Cross-section	trapezoidal with roof profile on top and support lugs on both sides
Connection options	Cut-outs to connect the Water Conduction Channel WKK every 670 mm
Drainage capacity	roof pitch 0 % = 1.78 l/s roof pitch 1 % = 1.81 l/s roof pitch 2 % = 1.82 l/s*m roof pitch 3 % = 1.83 l/s*m
Passage opening width	on both sides to the side of the slots of the triangle collection channel = approx. 4900 mm ² /m
Dimensions	Length: 2000 mm Width: 140 mm Height: 66 mm
Delivery form	Small quantities bundled by parcel service, larger quantities on a pallet by forwarding agent
Delivery weight	approx. 2.2 kg / piece
Accessoires	T-piece Item No. 14880 Length: 250 mm/leg Angle piece 90° or 2 x 45° Item No. 14832 Length: 300 mm or 2 x 150 mm Angle piece 30° or 2 x 15° Item. No. 14833 Length: 370 mm or 2 x 180 mm Connector Item No. 14831 Length: 120 mm Locking piece Item No. 30061

Area of use

- On roof areas up to approx. 5° roof pitch
- To support the guidance of excess water into drainage and substrate layers with large collection areas due to side inlet slots.
- As a collecting pipeline for several Water Conduction Channel WKK

Specific properties

- Slotted on both sides to take in excess water from the drainage level
 - Cut-outs to connect the Optigrün Water Conduction Channel WKK every 670 mm
 - Passage opening width = approx. 4900 mm²/m
- Precise measuring of quantity, modular dimensions and max. Flow lengths requires a calculation of the excess water present based on the local rainfall, the planned layer structure and the size of the catchment area, taking into account the discharge coefficient to be applied



The preceding details are guideline values established under laboratory conditions. These values are subject to a certain manufacturing tolerance. The data contained in this product information sheet represents Optigrün's technical knowledge at the time of publication. Optigrün reserves the right to change and update details in accordance with new insights and to modify specified properties accordingly. No liability accepted for misprints.

Optigrün international AG

Am Birkenstock 15 – 19,
72505 Krauchenwies-Göggingen
Tel. +49 7576 772-0, Fax +49 7576 772-299, info@optigruen.de

Optigreen Limited (Service UK only)

Suite G5 Albany Chambers, 26 Bridge Road East
Welwyn Garden City (Herts), AL7 1HL
Phone +44 203 5899400, Fax +44 207 1171664, info@optigreen.co.uk

