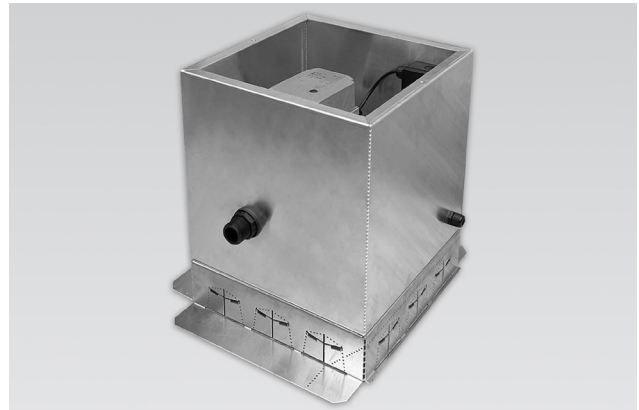


# OPTIGRÜN SFI 40

## Smart Flow Irrigation

Chamber for supplying water to the drainage level of a retention roof with Water Retention Boxes and Optigrün Smart Flow Control.



<b>Material chamber</b>	Aluminium
<b>Colour chamber</b>	Aluminium natural
<b>Material thickness</b>	2 mm
<b>Nominal voltage</b>	AC/DC 24 V
<b>Nominal voltage frequency</b>	50/60 Hz
<b>Power consumption in operation</b>	2,5 W
<b>Power consumption for wire sizing</b>	5 VA
<b>Protection class</b>	IP 65
<b>Ambient temperature</b>	-20 °C to +70 °C
<b>Dimensions</b>	L 400 x W 400 mm Base part floor area: L 560 x W 490 mm Height of chamber base part with inlet element: 500 mm can be raised in 50 mm and 100 mm increments
<b>Quantity/delivery unit</b>	Chamber base part, inlet element with valve technology, intermediate floor incl. fastening material Without cover
<b>Delivery form</b>	according to size of order by forwarding agent
<b>Pack size</b>	according to size of order
<b>Delivery weight</b>	approx. 8.8 kg/piece

### Area of use

- On retention roofs with Water Retention Boxes and Smart Flow Control
- For filling the retention room with water based on the measured water level and the precipitation forecast

### Specific properties

- Optigrün Smart Flow Irrigation SFI 40 is only functional in combination with an Optigrün Smart Flow Control and with the conclusion of a Smart Flow Control service contract
- Ensures permanent water availability in the retention room for sustainable irrigation of vegetation
- Inlet element with controlled rotary actuator and open/close ball valve DN 32
- Suitable for use with drinking or rain water
- Water supply connection with 1 1/4 inch external thread
- Power supply and control are provided via a cable from the Smart Flow Control
- Intermediate floor with 5 mm round perforation
- With rivet nuts, holes and screws for fastening the chamber components
- Insensitive to humic acids
- Load capacity in combination with Optigrün Inspection Chamber Cover DSA 40D approx. 800 kg

### Accessories

- Inspection Chamber Cover DSA 40D: Item No. 31903
- Inspection Chamber Extension ASA 40-5 (50 mm): Item No. 31905
- Inspection Chamber Extension ASA 40-10 (100 mm): Item No. 31906

### Please note:

The relevant standards regarding system separation to protect potable water against pollution (e.g. DIN EN 1717) must be observed.

The electrical connection to the Optigrün Smart Flow Control must be carried out by a qualified electrician.

The preceding details are guideline values established under laboratory conditions. These values are subject to a certain manufacturing tolerance. The data contained in this product information sheet represents Optigrün's technical knowledge at the time of publication. Optigrün reserves the right to change and update details in accordance with new insights and to modify specified properties accordingly. No liability accepted for misprints.

#### DEUTSCHLAND

Optigrün international AG  
Am Birkenstock 15 – 19 | 72505 Krauchenwies-Göggingen  
Tel. +49 7576 772-0 | info@optigruen.de

#### GREAT BRITAIN

Optigreen Limited  
Unit 157 | Milton Keynes Business Centre  
Foxhunter Drive | Linford Wood | Milton Keynes | MK14 6GD  
Tel. sales@optigreen.co.uk | +44 203 589 9400

**OPTIGRÜN**<sup>®</sup>  
ROOF GREENING