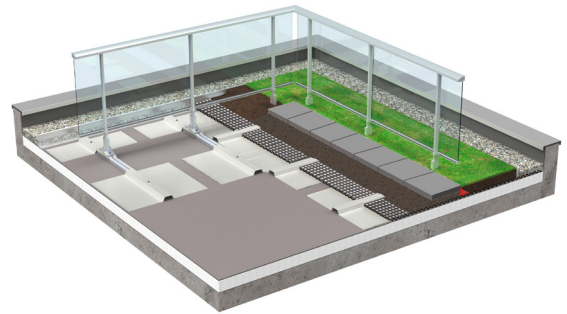


OPTIGRÜN SkyGard

Railings

Railing secured with a superimposed load for installation on flat roofs with private and/or public use by people up to 3° RP with patented articulated foot for the precise 3D adjustment of the railing posts in different roof pitch situations.



Material	Aluminium, die-cast zinc (Zamac 5)
Delivery form	By forwarding agent on pallet
Quantity/delivered form	According to size of order

Material

- Articulated foot to hold posts: Die-cast zinc (Zamac 5)
- Boom rails: Aluminium 2,000 x 80 x 42 mm
- Superimposed load-bearing plates: Aluminium 400-1,200 x 940 x 20 mm
- Posts: Aluminium 1,000-1,300 x 45 x 22 mm
- Handrail: Aluminium 3,000 x 55 x 38 mm or 3,000 x 90 x 38 mm (for full-surface filling)
- Intermediate spars: Aluminium 3,000 x 30 x 40 mm
- Filling: Glass and/or aluminium
- Coating: Powder coating according to RAL colour fan

Installation recommendation

The height of the gravel bed to cover/overbuild the the bracket rail should be at least 50 mm.



Area of use

On greened or gravelled flat roofs or those built with flagging and used by people with up to 3° roof pitch for private or public use with spar loads of 0.5 or 1.0 kN/m in the following usage categories in accordance with DIN EN 1991-1-1/NA:

- A, B1, T1, Z (spar loads inward/outward 0.5/0.5 kN/m)
- B2, B3, C1 to C4, D, E1.1, E1.2, E2.1, T2 (spar loads inward/outward 0.5/1.0 kN/m)
- Minimum loads: at 0.5 kN/m = 105 kg/m² and at 1.0 kN/m = 135 kg/m²

Accessories

- Necessary small assembly parts or fastening elements
- Door opening, locking system with profile cylinder lock with lever handle set
- Base spar for assembly to post sleeve.

Important information

When installing the railing directly at the roof edge without a fascia upstand, a stable, structurally effective edge upstand with approx. 1.0 kN/m horizontal shear strength is to be ensured (e.g. water-permeable aluminium angle bar with 2-3 mm sheet thickness screwed in place), ideally at the height of the planned layer structure.

Specific properties

- The railing is maintenance-free, i.e. there are no additional inspection costs after installation.
- Adjustability of the articulated foot: X axis: -5° < 0° < +5° / Y axis: -3.2° < 0° < +3.2° Torsion: -5.2° < 0° < +5.2°
- Installation area/posts 1,840-2,940 x 940 mm = where applicable, necessary installation space
- Type-inspected modular system in accordance with ETB directive E.1
- no penetration into the roof waterproofing / no thermal bridges
- no transmission of structure-borne sound into the ceiling construction
- Variable hand rail heights based on the structural possibilities
- Safe from climbing over in accordance with the regional building regulations (LBO)
- Glazing with 2 panes of laminated glass
- Option of choosing between various filling version made from glass or vertical newel posts

The preceding details are guideline values established under laboratory conditions. These values are subject to a certain manufacturing tolerance. The data contained in this product information sheet represents Optigrün's technical knowledge at the time of publication. Optigrün reserves the right to change and update details in accordance with new insights and to modify specified properties accordingly. No liability accepted for misprints.

Optigrün international AG

Am Birkenstock 15 – 19,
72505 Krauchenwies-Göggingen
Tel. +49 7576 772-0, Fax +49 7576 772-299, info@optigruen.de

Optigreen Limited (Service UK only)

Suite G5 Albany Chambers, 26 Bridge Road East
Welwyn Garden City (Herts), AL7 1HL
Phone +44 203 5899400, Fax +44 207 1171664, info@optigreen.co.uk

