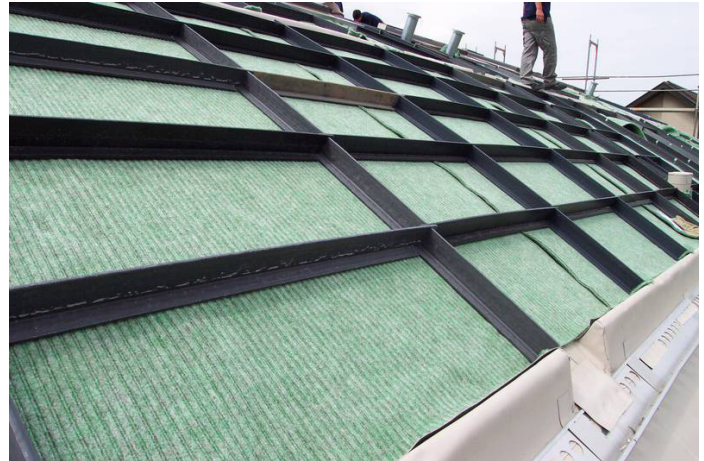


# OPTIGRÜN CARRIER

## Anti-Slip System T

Optigrün Anti-Slip System T as anti-slip protection on pitched roofs with 15° - 45° roof pitch for placing against structurally effective (eaves) abutments.



<b>Material</b>	Recycled PP
<b>Dimensions</b>	Thickness: 10 mm Height: 80 mm Width: 80 mm Element lengths carrier: 3,250 mm Element lengths sill: 1,070 mm
<b>Colour</b>	Black
<b>Sill spacing</b>	RP 15°-20° = 1,000 mm RP 21°-30° = 500 mm RP 31°-45° = 250 mm
<b>Max. shear load</b>	Per structurally effective abutment and carrier in flow direction = 6.9 kN
<b>Centre distance of the carriers</b>	1.0 m
<b>Accessories</b>	Extension for carrier Anti-slip shoes Anti-slip pins
<b>Quantity/ delivered unit</b>	According to size of order
<b>Delivery form</b>	According to size of order by parcel shipment or on euro pallets by forwarding agent
<b>Pack size</b>	According to size of order
<b>Delivery weight</b>	Approx. 4.3 kg/m
<b>Storage</b>	Cool and shady, protected from UV Plastic profiles can warp significantly in direct sunlight!

### Area of use

- As an anti-slip system on pitched roofs with inclines from 15° to 45° Attach shear supports to statically effective thrust bearings in the eaves area
- Calculation of the occurring shear forces is mandatory to dimension the statically effective thrust bearings

### Specific properties

- Carriers slotted 40 mm deep every 250 mm to insert the sills
- Sills at the ends also slotted 40 mm to insert into bracket
- Centre distance of the carriers 1 m
- pre-drilled holes for anti-slip pins
- Max. shear load: per structurally effective abutment and carrier in flow direction = 6.9 kN
- Sill spacing  
RP 15°-20° = 1,000 mm  
RP 21°-30° = 500 mm  
RP 31°-45° = 250 mm
- Material is not permanently UV stable. Material must be covered with substrate immediately after installation. No permanent outdoor storage.

The preceding details are guideline values established under laboratory conditions. These values are subject to a certain manufacturing tolerance. The data contained in this product information sheet represents Optigrün's technical knowledge at the time of publication. Optigrün reserves the right to change and update details in accordance with new insights and to modify specified properties accordingly. No liability accepted for misprints.

#### DEUTSCHLAND

Optigrün international AG  
Am Birkenstock 15 – 19 | 72505 Krauchenwies-Göggingen  
Tel. +49 7576 772-0 | info@optigruen.de

#### GREAT BRITAIN

Optigreen Limited  
Unit 157 | Milton Keynes Business Centre  
Foxhunter Drive | Linford Wood | Milton Keynes | MK14 6GD  
Tel. sales@optigreen.co.uk | +44 203 589 9400

**OPTIGRÜN**<sup>®</sup>  
ROOF GREENING