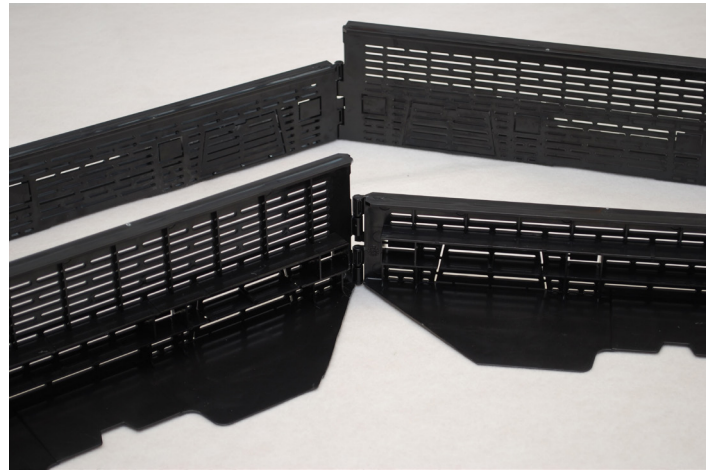


# OPTIGRÜN SKL

## System Edge Trim

Plastic edge trim with superimposed load with drainage slots for use on greened/gravelled flat roofs up to RP 0-5° as a separating strip between different bulk materials.



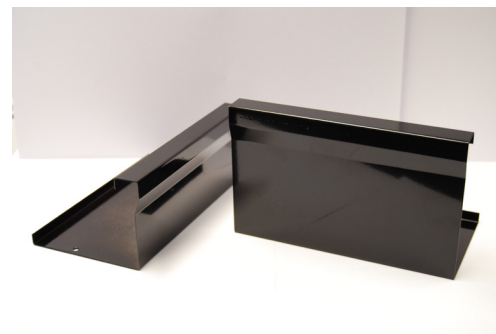
<b>Material</b>	ABS regranulate, UV-stabilised
<b>Nominal thickness</b>	Approx. 3.5 mm wall thickness
<b>Weight/SKL80</b>	Approx. 650 g/m
<b>Weight/SKL120</b>	Approx. 800 g/m
<b>Colour</b>	Black
<b>Dimensions SKL-80-300</b>	LxWxB: 300 x 80 x 110 mm
<b>Dimensions SKL-80-1100</b>	LxWxB: 1,100 x 80 x 110 mm
<b>Dimensions SKL-120-300</b>	LxWxB: 300 x 120 x 110 mm
<b>Dimensions SKL-120-1100</b>	LxWxB: 1,100 x 120 x 110 mm
<b>Accessories</b>	Aluminium angle connector, black painted, for the loose connection of the SKL with shortening, or to form a expansion joint
<b>Quantity/delivered unit</b>	SKL-80-300 = 20 pcs./cardboard box SKL-80-1100 = 30 pcs./cardboard box SKL-120-300 = 16 pcs./cardboard box SKL-120-1100 = 20 pcs./cardboard box connector = 20 pcs./cardboard box 1 connector is provided per 10 pieces of edge trim 1100 mm in length
<b>Delivery form</b>	according to size of order by parcel shipment or on euro pallets by forwarding agent.
<b>Pack size</b>	SKL-80-300: 310 x 230 x 250 mm SKL-80-1100: 1,150 x 260 x 330 mm SKL-120-300: 310 x 230 x 250 mm SKL-120-1100: 1,150 x 260 x 330 mm Connector: 600 x 230 x 230 mm
<b>Delivery weight</b>	SKL-80-300: 4.0 kg/cardboard box SKL-80-1100: 21.0 kg/cardboard box SKL-120-300: 4.0 kg/cardboard box SKL-120-1100: 17.0 kg/cardboard box Connector: 3.0 kg/cardboard box

### Area of use

- On greened/gravelled flat roofs up to 5° roof pitch as a water-permeable separating rail to separate different bulk materials.
- Note: Edge trim must always be filled to the upper edge on both sides

### Specific properties

- Simple fitting with plug-in/click system
- Simple connection of Optigrün Water Conduction Channel WKK profiles possible by simply pushing out the pre-cut shaped openings
- Despite thin wall, very stable underfoot due to reinforced walkways
- Specially coordinated to the various Optigrün drainage elements
- Low-cost due to the use of recycled plastic, environmentally-friendly manufacturing
- More dimensionally stable than thin aluminium edge trims
- Easy corner formation and
- Recyclable



The preceding details are guideline values established under laboratory conditions. These values are subject to a certain manufacturing tolerance. The data contained in this product information sheet represents Optigrün's technical knowledge at the time of publication. Optigrün reserves the right to change and update details in accordance with new insights and to modify specified properties accordingly. No liability accepted for misprints.

### Optigrün international AG

Am Birkenstock 15 – 19,  
72505 Krauchenwies-Göggingen  
Tel. +49 7576 772-0, Fax +49 7576 772-299, info@optigruen.de

### Optigrün Limited (Service UK only)

Suite G5 Albany Chambers, 26 Bridge Road East  
Welwyn Garden City (Herts), AL7 1HL  
Phone +44 203 5899400, Fax +44 207 1171664, info@optigruen.co.uk

